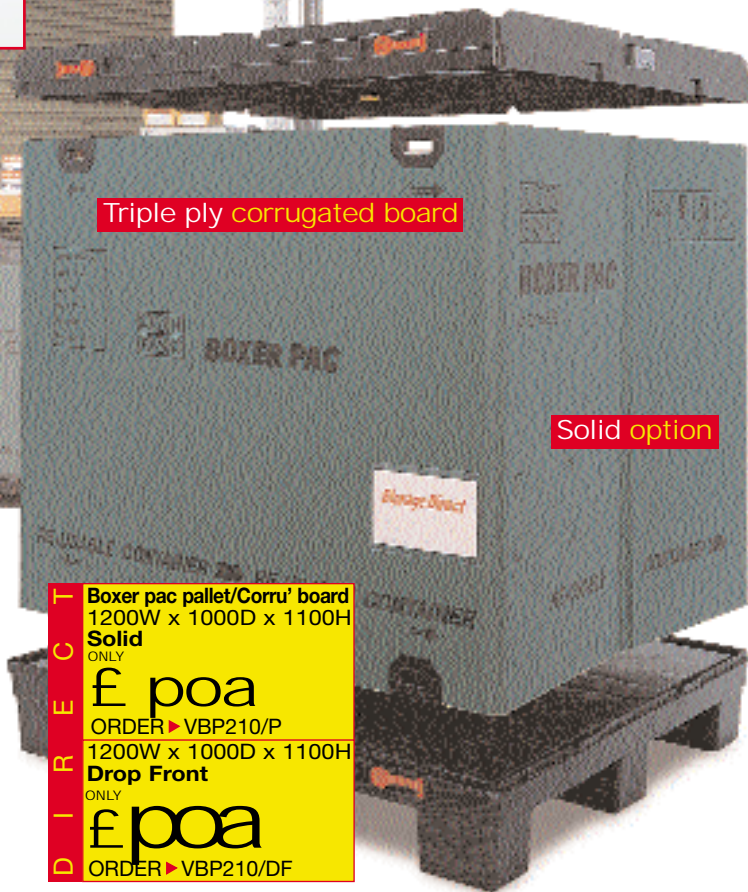


Boxer pac



These "durable reusable" Boxer pacs are an ideal replacement to single trip packaging ... available with either Triple Ply Corrugated Board or Con Pearl Extruded Polypropylene Sheet

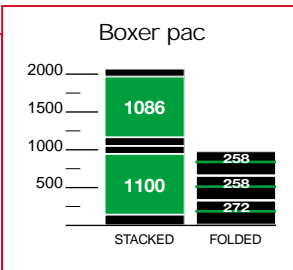
The versatile system provides outstanding usable volume for bulk storage and distribution. The system revolves around a cleverly designed, injection moulded base and lid - in between these a choice of concertina type sleeves can be inserted. When not in use the sleeves fold down neatly to be stored and protected between the base and lid. Two sleeve options are available which are suitable for most industrial uses: (1) a triple ply corrugated board or (2) a Con Pearl PP sheet, both available with the option of a fold down front flap section for easy product identification and picking.

Boxer pac pallet/Corru' board
1200W x 1000D x 1100H
Solid ONLY
£ poa
ORDER ▶ VBP210/P
Boxer pac pallet/Con Pearl
1200W x 1000D x 1100H
Drop Front ONLY
£ poa
ORDER ▶ VBP210/DF

Boxer pac pallet/Con Pearl
1200W x 1000D x 1100H
Solid ONLY
£ poa
ORDER ▶ VBP210/P/CON
Boxer pac pallet/Con Pearl
1200W x 1000D x 1100H
Drop Front ONLY
£ poa
ORDER ▶ VBP210/DF/CON

VBP210/DF/CON
(Drop Front)
Nominal External: 1200 x 1000 x 1100
Nominal Internal: 1150 x 945 x 910
Static Load: 500kg x 3 high
Dynamic Load: 500kg x 2 high
Wt: 33.4kg
Litres: 990

VBP210/P/CON
(Solid)
Nominal External: 1200 x 1000 x 1100
Nominal Internal: 1150 x 945 x 910
Static Load: 500kg x 3 high
Dynamic Load: 500kg x 2 high
Wt: 33.4kg
Litres: 990



VBP210/DF
(Drop Front)
Nominal External: 1200 x 1000 x 1100
Nominal Internal: 1150 x 945 x 910
Static Load: 500kg x 3 high
Dynamic Load: 500kg x 2 high
Wt: 33kg
Litres: 990

VBP210/P
(Solid)
Nominal External: 1200 x 1000 x 1100
Nominal Internal: 1150 x 945 x 910
Static Load: 500kg x 3 high
Dynamic Load: 500kg x 2 high
Wt: 33kg
Litres: 990



- Folds to as little as a quarter of their erected height
- Effective utilisation of vehicle and storage space
- Remains a self contained pack - even when folded
- Boxer pacs stack safely with a total load of 1500kg
- Ideal for hygienic applications

◀ Neat sliding locking tabs secure the sleeve firmly ...

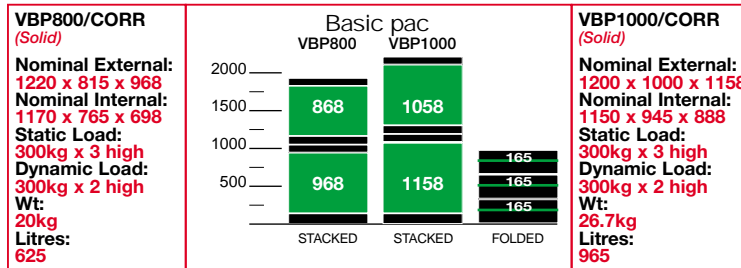
A pair of lightweight Polypropylene injection mouldings of pallet and lid, together with a triple wall corrugated sleeve.

Basic pac

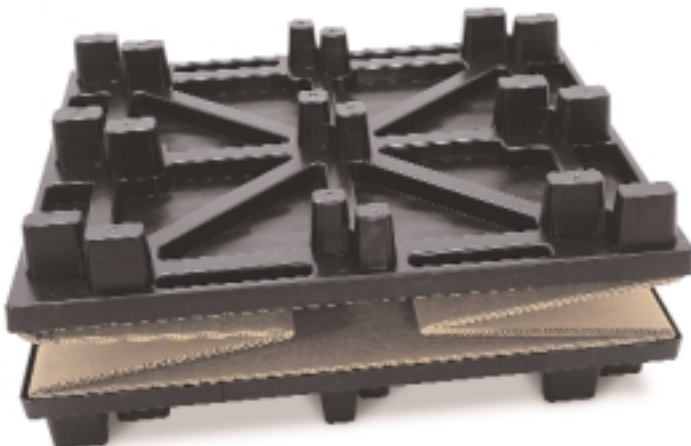


The Basic pac is an ideal reusable low cost solution for storage of **Pumps, Control Systems, Automotive Car Parts, Electrical Goods** and also as a bulk pack for commodity items i.e. **Pre-packed food**

- Lightweight
- Simple and easy to erect and fold
- Pallets Nest (ratio 53%)
- Highly Cost Effective. A competitively priced alternative to wooden crates
- Basic pacs stack safely with a total load of 300kg
- Where trippage is low or not feasible, Basic pac is an inexpensive single-trip package, i.e. for export shipments



Working temperature -25°C to +50°C



Features:

- This three piece folding unit consists of two identical pallets and a folding sleeve. In its folded state it collapses to only 165mm in height.
- When stacked Basic pac locks together for extra stability in transportation.

